



NETBOTZ 420/320 SERIES APPLIANCE

WALL-MOUNT UNIT



RACK-MOUNT UNIT

HIGHLIGHTS

- Actively monitors unsupervised, business-critical locations and the systems working there, to provide continuous business availability
- Ideal for smaller locations such as telco closets and remote server rooms
- Provides advance warning of equipment failure
- Protects a room and its valuable contents, like IT equipment, from damage due to water leaks, high or low temperatures, smoke or dust, humidity, vandalism, theft, and many more dangerous environmental and physical factors
- Reduces downtime and associated costs
- Ideal for small to medium sized spaces such as wiring closets and rooms that require physical threat monitoring and protection
- Designed to help lower total costs by leveraging your existing IP network investments
- Provides outstanding price/performance
- From the leader in IP-based physical security solutions



Reliable access to information is critical in today's on-demand business climate. The requirements on IT professionals are ever increasing - greater network speed, greater reliability, and 100% uptime ... all while resources are shrinking and responsibilities are growing.

Monitoring and protecting critical assets and spaces from the environment and physical factors that can threaten continuous business availability is a key concern. NetBotz designed two new products that protect against all kinds of threatening conditions - human error, intrusion, extreme heat, low humidity, water leakage - that could jeopardize the processes, operations, and transactions that form the backbone of business.

NetBotz appliances provide early warning about potential problems, allowing for quicker recovery when things do go wrong, while saving money and improving productivity. Like remote eyes and ears, NetBotz monitors your distributed assets 24/7.

CONTINUOUS BUSINESS AVAILABILITY IS THE FIRST PRIORITY

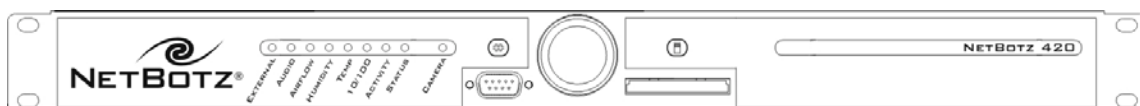
NetBotz 320 is the ideal active monitoring solution for small spaces, such as wiring closets, that require comprehensive physical threat monitoring with limited need for future expansion.

- Completely self-contained and web accessible
- Integrated temperature, humidity, dew point, and air flow sensors that monitor the environment
- Integrated audio sensors detect audio alerts from devices such as smoke alarms, intrusion detection devices, and more
- Door switch sensor notifies when the room or server cabinet is accessed
- Four external sensor ports accommodate particle, fluid, amperage, dry contact, and other sensors
- Sends alerts using e-mail and SNMP traps when any monitored condition goes outside of a user-specified range
- Posts alerts and sensor data to web servers using built-in HTTP post support, as well as forwarding to other systems using FTP data delivery
- Built-in camera enables you to easily view the condition of equipment via web-based interface. Automatically captures images of the room whenever a door to the room is opened, or optionally when motion is detected
- Camera resolution up to 640 x 480, 24 bit-color
- NetBotz appliances are manageable objects that can be used with your existing SNMP-based network management system
- Sturdy swivel bracket that enables 360° positioning
- SSL-encrypted interactive and alert communications
- On-board storage of alerts for up to 12 hours
- Rack- and wall-mount form factors

NetBotz 420 is a fully featured monitoring solution ideal for small to medium sized spaces like wiring closets, server rooms, or other spaces that require comprehensive monitoring. The NetBotz 420 has the ability to expand to nearby locations via additional Camera Pods, Sensor Pods, Output Relay Pods, Power Control Pods, and alternative network connections.

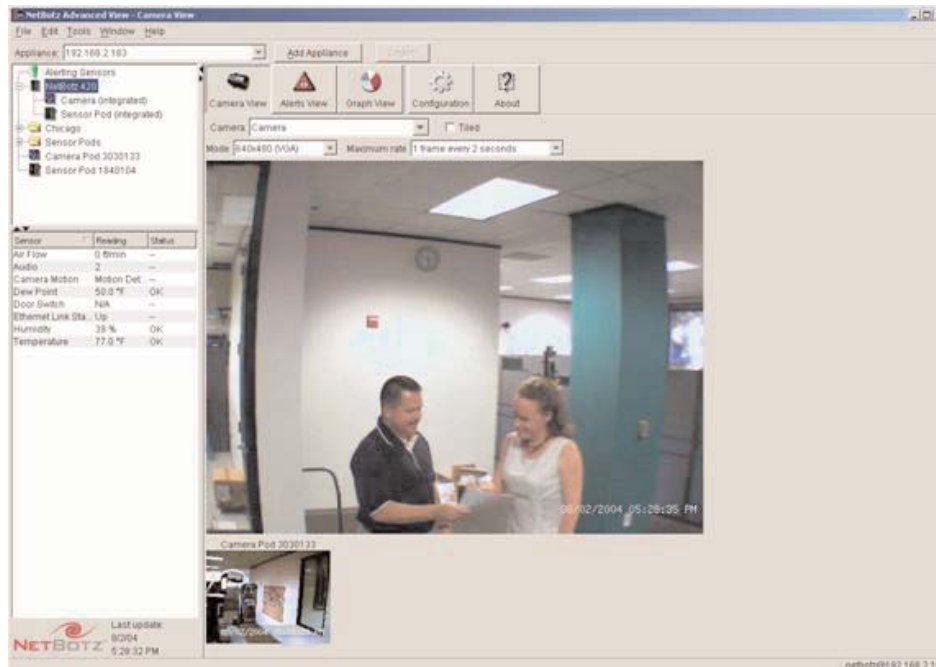
In addition to all the features of the 320, the 420 provides:

- USB 1.1 port supports the addition of one Camera Pod or CCTV Adapter Pod and up to four non-camera pods (Sensor Pod, Output Relay Pod, Power Control Pod)
- Optional network connections: 802.11b wireless LAN, GSM/SMS wireless modem, PPP dial modem
- Camera Motion Sensor software included
- Basic Device Crawlers software included



WEB-BASED INTERFACE PUTS YOUR EQUIPMENT AT YOUR FINGERTIPS

With NetBotz appliances, all you need to monitor your computer or network equipment and the surrounding environment is an electrical outlet and either a standard Ethernet LAN connection or a supported external modem connected to a phone line. Configuring the NetBotz appliance is easy. Just connect your appliances to your network, assign IP addresses for the appliances, and then set thresholds for the environment conditions you want to monitor (such as temperature, humidity, air flow, or an external sensor). When exceeded, an e-mail or SNMP trap alert will automatically be generated. Color camera images are continuously captured and updated in the NetBotz Advanced View, and captured images are included in alert notifications as well. These features ensure that your NetBotz appliances can be monitored and managed from across the room or around the world.



NetBotz Advanced View

CREATE A PHYSICAL SECURITY NETWORK WITH NETBOTZ CENTRAL

Use NetBotz Central to expand the power of your NetBotz appliances. A key component of the NetBotz monitoring solution, NetBotz Central gives you a 24/7 view into the status of your environment - whether on the production floor, in a remote server room, in a medical supplies storage area, or anywhere there are assets to protect. By providing a centralized way to mass configure, view and analyze data collected by NetBotz monitoring appliances, NetBotz Central creates a physical security network that spans the organization across offices, regions, borders and boundaries.

EXTERNAL SENSOR SUPPORT

External sensor ports enable you to extend and enhance the functionality of your NetBotz appliance. You can use the external sensor ports to add NetBotz sensors such as NetBotz Amp Detector amperage monitoring devices, External Temperature Sensors, External Humidity Sensors, and External Fluid Detector (available separately). Also, with the NetBotz Dry Contact Cable you can connect a variety of third party sensors for detecting condensation, glass break, vibration and more.

NETBOTZ 420 WALL/RACK APPLIANCES

HOUSING: Wall Model: 12.45cmW x 19.55cmH x 2.27cmD, 20 gauge metal. Rack Model: 19" rack mount, 1U, 20 gauge metal.

INDICATORS: Appliance operational/alert status, network speed, network activity, temperature out-of-limit, camera activity, humidity out-of-limit, airflow out-of-limit, sound detected, external sensor violation detected LEDs.

PODS: Supports up to 1 additional camera pod (Camera Pod 120 or CCTV Adapter Pod 120) and up to 4 additional pods other than camera pods (any combination of Sensor Pod 120s, Output Relay Pod 120s, or Power Control Pod).

PROTOCOLS: TCP/IP, HTTP, SMTP, SNMP, DHCP, DNS, Socks V4 or V5 Proxy server.

NETWORK INTERFACES: Ethernet 10/100 Mbps standard, optional 802.11b, GSM/SMS, PPP modem.

MANAGEMENT INTERFACE: Supports Internet Explorer version 5.5 or later; Netscape Navigator version 4.79, 6.0 or 7.02; or Mozilla 1.3 or later on these operating systems: Microsoft Windows 98 SE, Windows ME, Windows 2000, Windows NT 4.0 or later, Windows XP; Red Hat Linux 7 or 8; or Solaris 9. Use of the Advanced View interface requires a one-time download of the Java Runtime Environment Plug-in from Sun Microsystems. Display Resolution 1024 x 768 minimum.

OPERATIONAL ENVIRONMENT: Temperature: 2° to 50° C (35° F to 120° F). Relative Humidity: 10% to 90% (noncondensing). For indoor use only. Not designed for use in corrosive or caustic environments.

NETBOTZ 320 WALL/RACK APPLIANCES

HOUSING: Wall Model: 12.45cmW x 19.55cmH x 2.27cmD, 20 gauge metal. Rack Model: 19" rack mount, 1U, 20 gauge metal.

INDICATORS: Appliance operational/alert status, network speed, network activity, temperature out-of-limit, camera activity, humidity out-of-limit, airflow out-of-limit, sound detected, external sensor violation detected LEDs.

DATASPEED: Ethernet 10/100 Mbps (10/100 BaseT).

PROTOCOLS: TCP/IP, HTTP, SMTP, SNMP, DHCP, DNS, Socks V4 or V5 Proxy server.

NETWORK INTERFACES: Ethernet 10/100 Mbps standard.

MANAGEMENT INTERFACE: Supports Internet Explorer version 5.5 or later; Netscape Navigator version 4.79, 6.0 or 7.02; or Mozilla 1.3 or later on these operating systems: Microsoft Windows 98 SE, Windows ME, Windows 2000, Windows NT 4.0 or later, Windows XP; Red Hat Linux 7 or 8; or Solaris 9. Use of the Advanced View interface requires a one-time download of the Java Runtime Environment Plug-in from Sun Microsystems. Display Resolution 1024 x 768 minimum.

OPERATIONAL ENVIRONMENT: Temperature: 2° to 50° C (35° F to 120° F). Relative Humidity: 10% to 90% (noncondensing). For indoor use only. Not designed for use in corrosive or caustic environments.

08/03/2004



ABOUT NETBOTZ

Austin, Texas-based NetBotz, Inc. is the leading global provider of IP-based intelligent physical security solutions. Thousands of organizations use the NetBotz solution, which prevents business and financial losses attributed to network downtime by providing early warning of conditions that threaten the integrity of a company's data, technical and equipment assets. NetBotz markets its solution through a network of distributors, solution partners and accredited resellers. NetBotz has received the Best in Show Award in the Network Management Category at NetWorld+Interop and is a recipient of KPMG's Start-up Standout Award.

WWW.NETBOTZ.COM

1.877.908.BOTZ(2689) 11044 RESEARCH BLVD., BLDG. C200 AUSTIN, TX 78759

BotzWare, NetBotz, RackBotz, WallBotz, and the NetBotz symbol are registered trademarks of NetBotz, Inc. All other company and product names mentioned are used only for identification purposes and may be trademarks or registered trademarks of their respective companies. © 2004 NetBotz Corporation. All rights reserved.