

In today's uncertain business climate, it's critical to have real-time, organization-wide access to physical security data that can threaten the systems, infrastructure and assets that run your business. NetBotz Central 2.1 provides an efficient, productive way for organizations to manage their company-wide NetBotz appliance implementation and the physical threat data it captures. By providing a centralized way to mass configure, deploy and view data collected by NetBotz monitoring appliances, NetBotz Central creates a physical security network that spans the organization across offices, regions, borders and boundaries.

### HIGHLIGHTS

- Powerful tool for centralized physical threat monitoring of multiple sites, rooms, closets, or cabinets
- Ability to arrange NetBotz appliances into hierarchical device groups for mass configuration operations, graphing, and reporting
- Map View for easy-to-interpret "heads-up" information. Table View for detailed information in compact format
- Ability to view current camera images for multiple appliances, or use NetBotz Surveillance for powerful surveillance functionality
- Access to past alerts — including pictures and audio clips — by device/date/appliance
- Ability to produce trend graphs and reports, export data
- Scalable architecture — Standard version 120GB of alert and data storage, Enterprise version 1 Terabyte RAID 5 storage, redundant power supplies and network interfaces
- Administrator-set access control

### NETBOTZ CENTRAL 2.1

NetBotz Central 2.1 software enables you to centrally manage and monitor all of your NetBotz threat prevention sentry appliances. Now, it also includes powerful new features that provide unparalleled physical threat management. NetBotz Central gives you a 24/7 view into the status of your environment — whether on the production floor, in a remote server room, medical supplies storage area and more.

Available in two models — the 1U Standard Edition, as well as the new more-powerful 2U Enterprise Edition — NetBotz Central 2.1 appliances enable you to access, control, and configure your NetBotz physical threat protection network using a simple, intuitive interface. All NetBotz Central models initially support up to 15 NetBotz appliances, with license packs available to support hundreds of additional nodes.

### BENEFITS

- *Advanced warning of equipment failure so you can act before systems go out*
- *Increased system availability*
- *Reduced downtime costs*
- *Improved monitoring efficiency enhances user productivity*
- *Simplified trend analysis and planning with easy to use graphing, reporting, and exporting tools*
- *Ability to quickly deal with unauthorized accesses to equipment*
- *Straightforward implementation and administration; Low overhead costs*



## ORGANIZE AND CONFIGURE YOUR NETBOTZ SENTRIES

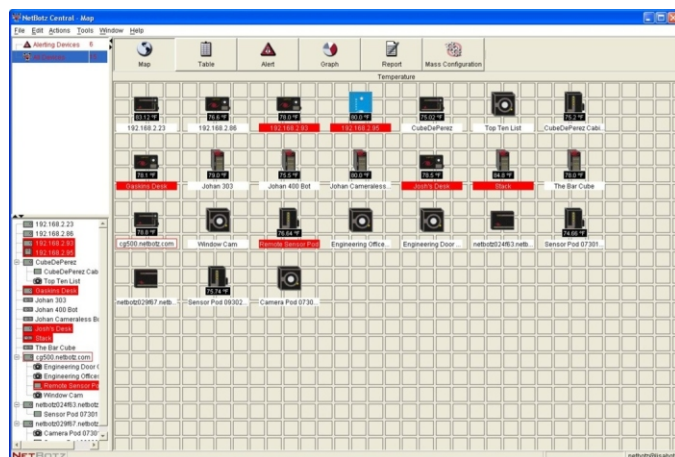
NetBotz Central lets customers set up logical device groups of NetBotz sentry appliances and pods based on information such as IP address range, appliance model, or location. Device groups can be nested hierarchically within other device groups and can be updated automatically when new NetBotz sentries are added using the auto-discovery process. Once a device group is defined, configuration and threshold operations can be performed on all devices contained in the device group (or in any sub-groups that are nested within the device group) simultaneously. Operations that can be performed include scheduling when sensor notification is enabled or disabled, specifying e-mail or SNMP notification settings, and configuring sensor thresholds (such as temperature, humidity, or air flow).

## EASILY MONITOR YOUR SENTRIES

The **Map View** interface presents all appliances in the currently selected device group in an easy-to-monitor graphic display. Colors are used to indicate the current state of each sentry in the group, alerts or network outages are easily noted, and the current reading of a selected sensor is displayed for all appliances. You can also use custom background graphics background images (such as a map of a city or a floor plan of a room) and rearrange the contents of the device group to better represent the physical environment in which the appliances are installed. Current sensor readings, camera image, and status of any NetBotz sentry are easily available from the Map View. Simply mouse over an icon in Map View, pause for a moment, and the current readings for all sensors integrated with or connected to that appliance appear in a pop-up window.

NetBotz Central also supports a **Table View**, which presents all appliances and pods in the currently selected device group in a table display. Colors are used to indicate the current state of each appliance or pod in the group, making alerts or offline status appliances easy to spot.

### MAP VIEW



### GRAPH VIEW



## GENERATE SENSOR DATA GRAPHS AND REPORTS

With NetBotz Central, you can generate graphs to display sensor data for selected appliances. Using the **Graph View**, simply select one or more appliances from a device group, select the desired sensor type, and specify the time/date range using the calendar control. NetBotz Central then generates a graph for the selected appliances, showing all available sensor readings in an easy-to-read graph. If you want to see a portion of the graph in more detail simply use the mouse to select a portion of the graph and zoom in on the selected data, generating a more detailed graph in a new window. Graphs can be saved in JPG and BMP format for use in reports or presentations.



The **Report View** enables you to generate sensor data reports using controls that work similarly to those for graphing. However, the data that is returned based on your selections appears in a table view. Data about multiple appliances can be combined into a single report to simplify data collation, collection, and comparison. The data from the report (or from a selected area of the report) can be exported as a delimited text file for use in other applications. Alert reports can be generated to show all alert events for a given time-frame and location.

## MANAGE, COLLATE, AND REVIEW ALERTS

Current and past alerts are easily accessible. With just a couple of mouse clicks, the user can review alert posts by device group, date, and appliance. The **Alerts View** shows picture and non-picture alert posts that are stored on the NetBotz Central appliance for each sentry in the selected group. Also, the Alerts View supports playback of both audio and video in alerts generated by WallBotz 500 appliances.

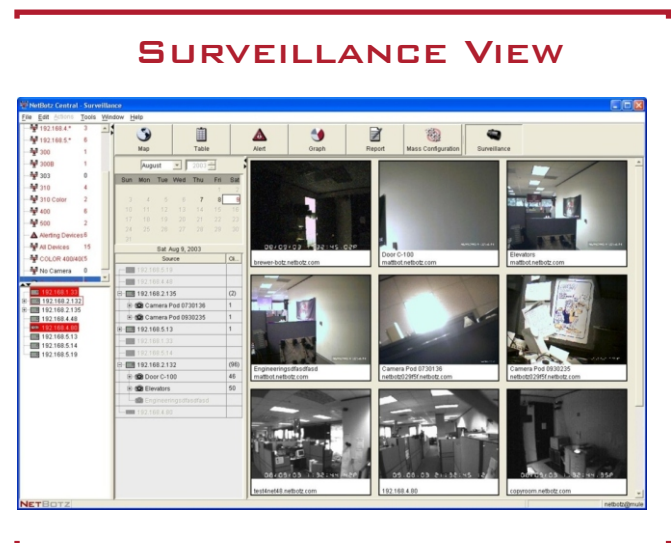
## USER ADMINISTRATION

NetBotz Central provides a high degree of control over user access and privileges, enabling you to secure your physical threat prevention network while still providing your users with sufficient authorization to get their jobs done. For each user account, detailed controls allow specification of what device groups can be accessed and exactly which tasks may be executed by the user on appliances within the permitted groups. User interface characteristics — such as color scheme, whether IP address or appliance location is displayed, and more — can be customized to the individual user. NetBotz Central's LDAP authentication support lets you authenticate users on remote LDAP-compatible directories such as Microsoft Active Directory or Open LDAP Directory Server.

## POWERFUL ADD-ON SOFTWARE AND OPTIONS

**NETBOTZ SURVEILLANCE:** An add-on software application for NetBotz Central that enables you to create a visual record of who enters IT areas and what they do while they're there. This appliance-based software acts as a central repository for pictures captured by the NetBotz monitoring appliances and provides you with options to quickly access surveillance events logged by date and time and play movie-like clips of those events. NetBotz Surveillance also displays live “thumbnail” images from NetBotz appliances.

**REMOTE DATABASE OPTION:** A separately available license key-based upgrade for use with NetBotz Central. Remote Database Support enables you to use a supported remote Oracle, Microsoft SQL Server, or MySQL database management system to store NetBotz Central data.



## CHOOSE FROM TWO NETBOTZ CENTRAL APPLIANCE MODELS

NetBotz Central 2.1 appliances are available in two models:

**STANDARD MODEL:** 1U NetBotz Central appliance, the Standard Model features a Pentium processor, 1GB of RAM, a 120GB hard drive for on-appliance data storage, and dual 10/100/1000 Ethernet connections.

**ENTERPRISE MODEL:** Powerful and fault-tolerant, this 2U NetBotz Central model features a 2.4GhZ Xeon processor, 2GB of RAM, 1TB of data storage using 6 hot-swappable hard drives in a RAID-5 array, and dual 10/100/1000 Ethernet connections. The Enterprise Edition appliance also features redundant, hot-swappable power supplies.

## [ SPECIFICATIONS ]

### NETWORK INTERFACE:

**Standard:** Dual Ethernet 10/100/1000 Mbps Connections

**Enterprise:** Dual Ethernet 10/100/1000 Mbps Connections

### CASE TYPE:

**Standard:** 19" 1U Rack Mount

**Enterprise:** 19" 2U Rack Mount

### HEIGHT / WIDTH / DEPTH:

**Standard:** 1<sup>3</sup>/<sub>4</sub>"H / 17<sup>1</sup>/<sub>2</sub>"W (19"W with Rack Mounts) / 19<sup>3</sup>/<sub>4</sub>"D

**Enterprise:** 3 <sup>1</sup>/<sub>4</sub>"H / 17<sup>1</sup>/<sub>2</sub>"W (19"W with Rack Mounts) / 19<sup>3</sup>/<sub>4</sub>"D

### POWER SUPPLY:

**Standard:** AC 115/230V 60/50Hz 6/3Amp 150W

**Enterprise:** Dual hot-swappable AC 115/230V 60/50Hz 6/3Amp 150W supplies

### ON-BOARD RAM AND DATA STORAGE:

**Standard:** 1GB RAM, 1 120GB hard disk drive

**Enterprise:** 2GB RAM, 1TB of data storage (6 hot-swappable hard disk drives in a RAID-5 array; 1TB total available storage)

### CLIENT SYSTEM REQUIREMENTS:

**Operating System:** Microsoft Windows 98 Second Edition, Microsoft Windows ME, Microsoft Windows 2000, Microsoft Windows NT 4.0 or later, Windows XP

**Screen Resolution:** 1024 x 768 recommended



## ABOUT NETBOTZ

*Austin, Texas-based NetBotz, Inc. is the leading global provider of IP-based intelligent physical security solutions. Thousands of organizations use the NetBotz solution, which prevents business and financial losses attributed to network downtime by providing early warning of conditions that threaten the integrity of a company's data, technical and equipment assets. NetBotz markets its solution through a network of distributors, solution partners and accredited resellers. NetBotz has received the Best in Show Award in the Network Management Category at NetWorld+Interop and is a recipient of KPMG's Start-up Standout Award.*



BotzWare, NetBotz, RackBotz, WallBotz, and the NetBotz symbol are registered trademarks of NetBotz, Inc. All other company and product names mentioned are used only for identification purposes and may be trademarks or registered trademarks of their respective companies.

© 2004 NetBotz Corporation. All rights reserved.

03/12/2004

1.877.908.BOTZ(2689) 11044 RESEARCH BLVD., BLDG. C200 AUSTIN, TX 78759